



**IDT**

**TIMING COMMANDER™**

*Get Command of Your Timing Tree*

# Timing Commander Installation

TSD Applications, IDT

November, 2013



IDT

TIMING COMMANDER™

*Get Command of Your Timing Tree*

# Installing Timing Commander

The Timing Commander installation requires the following two files:

- 1) TimingCommanderSetup.exe
- 2) <PersonalityFile>.tcp

The .exe file will install the Timing Commander software.

The ".tcp" file is the "Personality" file that contains the GUI for a specific device. For example, the file may be named "IDT8T79S818I-08\_v0.6.tcp".



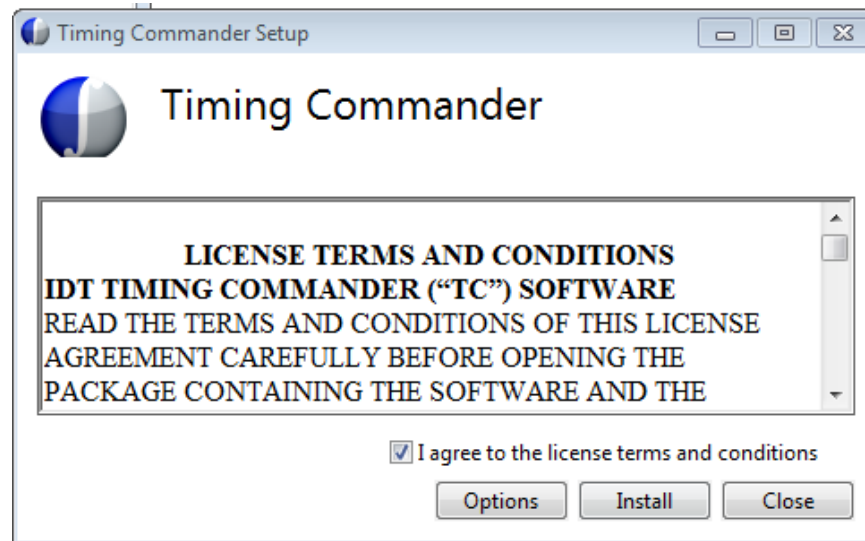
IDT

TIMING COMMANDER™

*Get Command of Your Timing Tree*

# Installing Timing Commander

1. Unzip the Timing Commander installation file.
2. Execute "TimingCommanderSetup.exe"
3. Accept the "Terms and Conditions" and press "Install".



4. This will install Timing Commander, necessary hardware drivers, help files, and a "Timing Commander" shortcut in the Window Programs



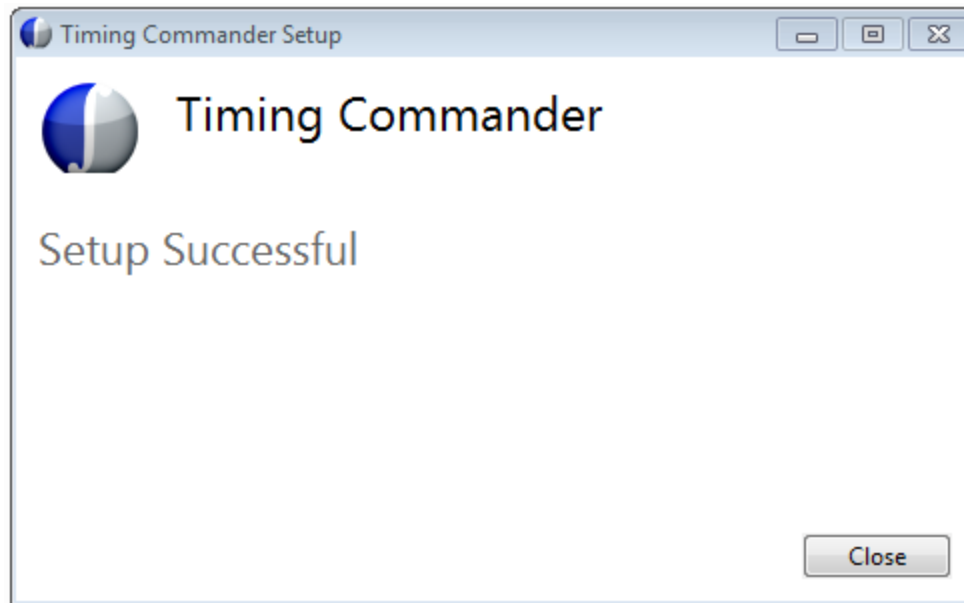
IDT

TIMING COMMANDER™

*Get Command of Your Timing Tree*

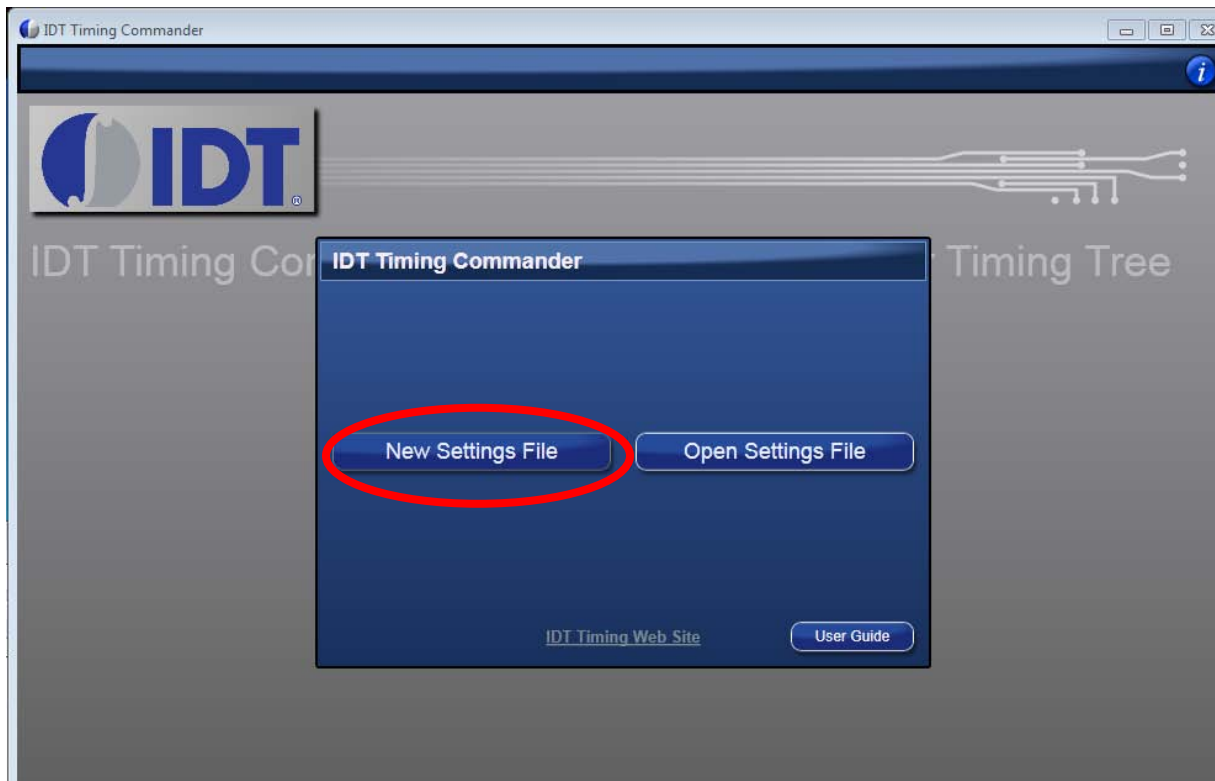
# Installing Timing Commander

After the installation, the “Setup Successful” message will be displayed.



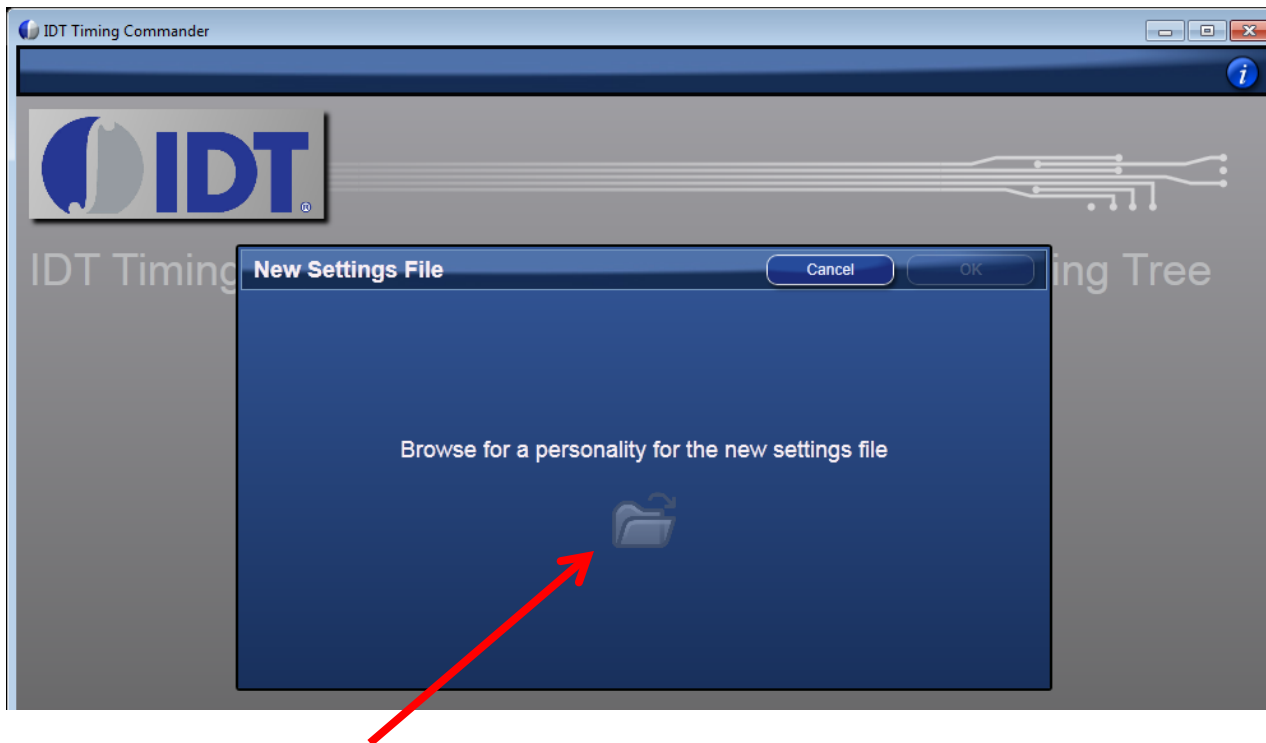


- Go to Windows>Programs>IDT and click on “Timing Commander”
- On the first run, there will be two options, “New Settings File” and “Open Settings File”. Select “New Settings File”.





- The next screen will prompt for the “Personality” file.



- Click on the small folder to browse for the “.tcp” file.
- Locate and select the “.tcp” file then press “Open”.



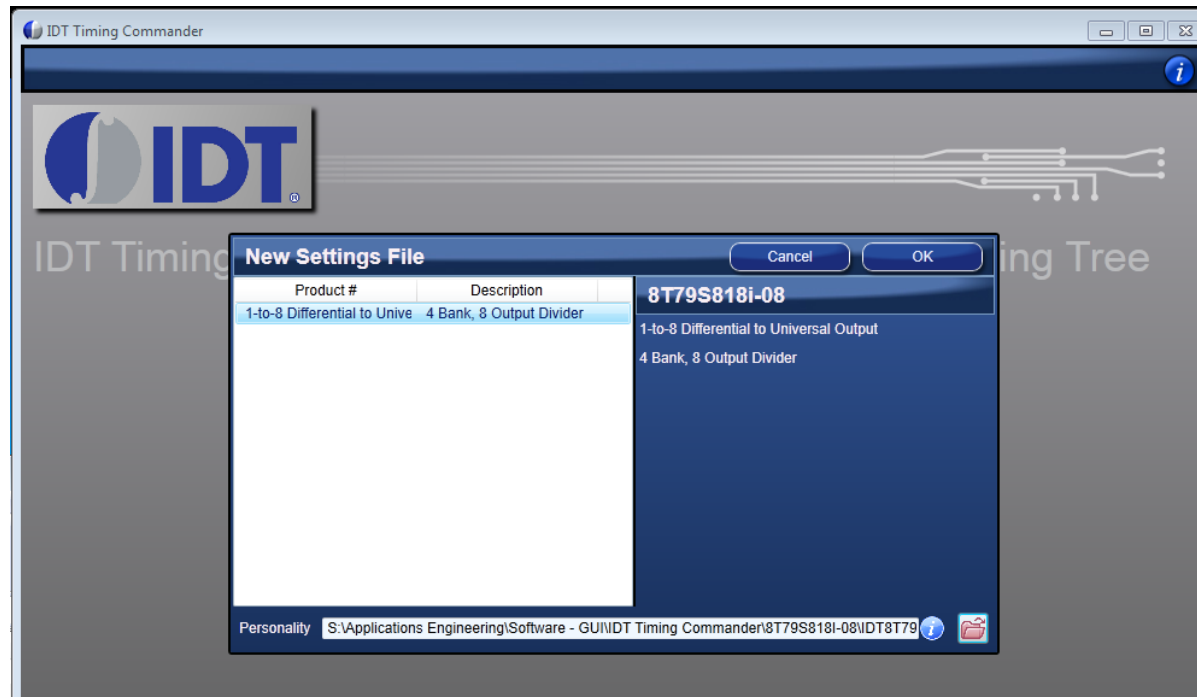
**IDT**

**TIMING COMMANDER™**

*Get Command of Your Timing Tree*

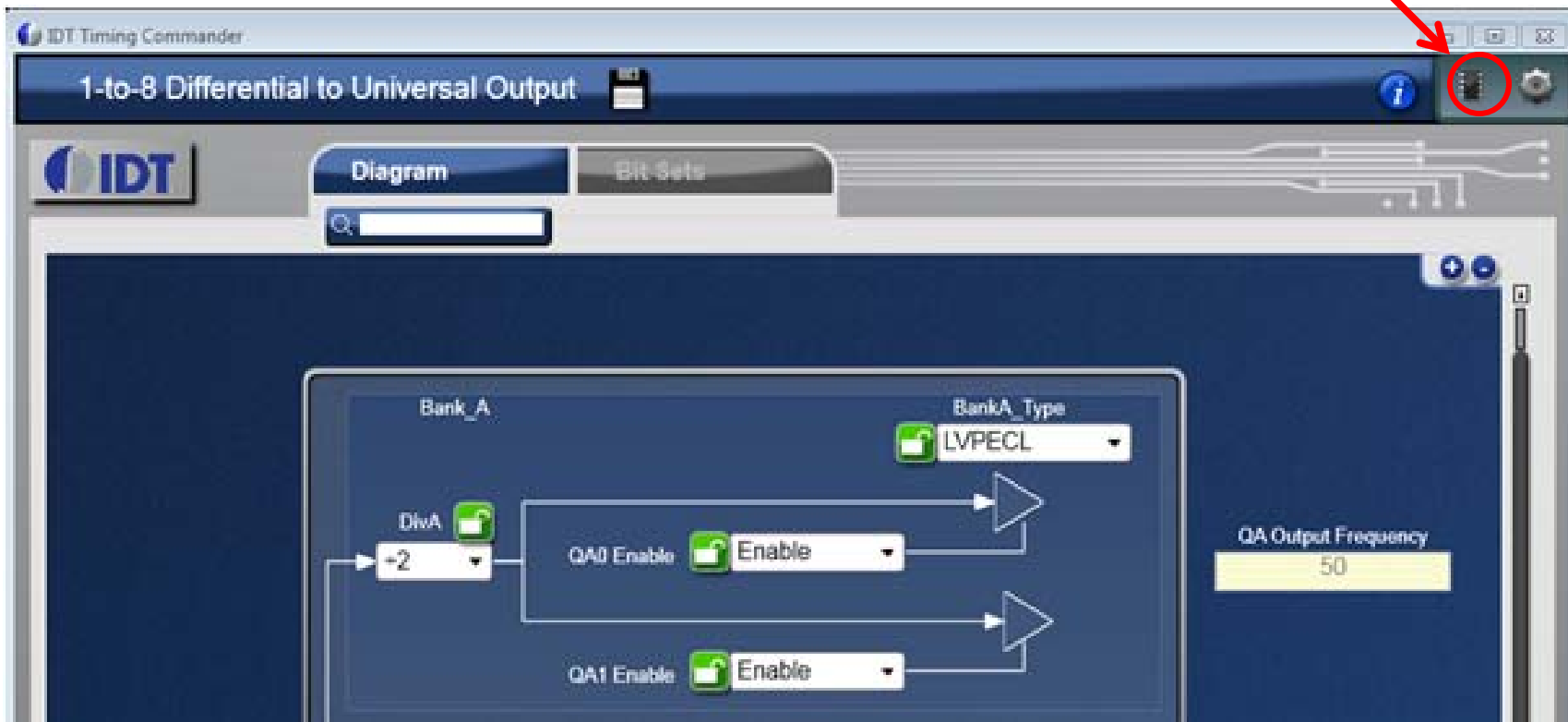
# Installing a Personality

- The personality will now be listed under the “Product #” column. In the future, as more personalities are added, they will be visible in this location.
- Select the personality to load (only one available on first run).
- Press “OK” to load the GUI.





- Connect the Evaluation board to the PC with a USB cable.
- The final step necessary in order to communicate with the evaluation board is to click the “Connect Chip” button, at the top-right of the GUI.







- For additional Help, the User Guide is available by clicking “User Guide” on the start-up screen of Timing Commander.

